

Tusk Severe Impact UHMW Dirt Bike Skid Plate

Part Number: 2119120003

2017-22 KTM/Husqvarna 250/300 2 Strokes

Thank you for purchasing the Tusk Severe Impact UHMW Dirt Bike Skid Plate. Please take note of the information and instructions below to get the most out of your Tusk product.

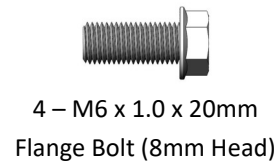


INSTALLATION AND PRODUCT INFORMATION

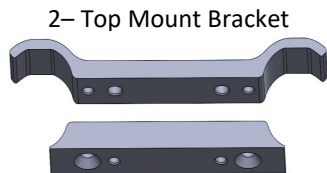
Attention: Before you throw any packaging away, make sure you received all the necessary hardware.

Hardware:

- 1- Skid Plate
- 2- Mount Brackets (Top and Bottom)
- 1- Rear Mount Bracket
- 8- M6 x 1.0 x 20MM Countersunk Allen Bolt
- 4- Cup Washer
- 4- M6 x 1.0 x 20MM Flange bolt (8mm head)
- 1- Thread locker

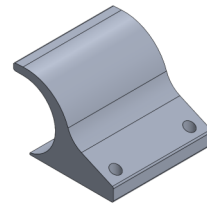


1- Thread Locker



2- Top Mount Bracket

2- Bottom Mount Bracket



1-Rear Mount Bracket



1- Skid Plate

- Using the **4-M6 x 1.0 x 20mm Countersunk Allen Bolts & Thread Locker**, tightly install the **Rear Mount Bracket** onto the **Skid Plate** with the open end facing the linkage guard.

Fig. 1

- Insert the **2- Mount Brackets (Top and Bottom)** into the frame of the bike using the **8-M6 x 1.0 x 20mm Countersunk Allen Bolt**, leaving the clamps loose enough for proper alignment. Place one forward of the front motor mount (approximately 1"), and one behind (approximately 1.25"). **Fig. 2**



Fig. 1

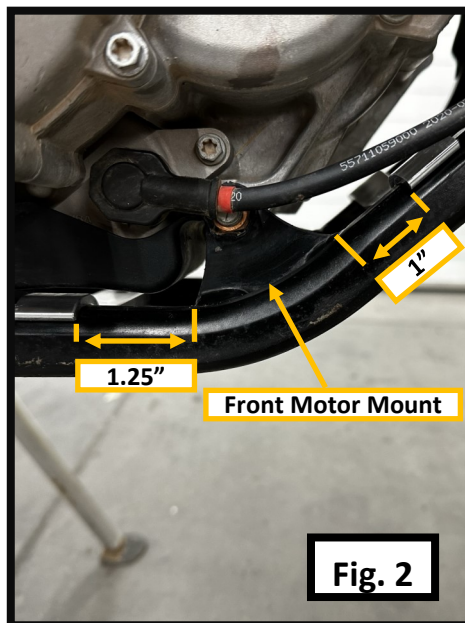


Fig. 2

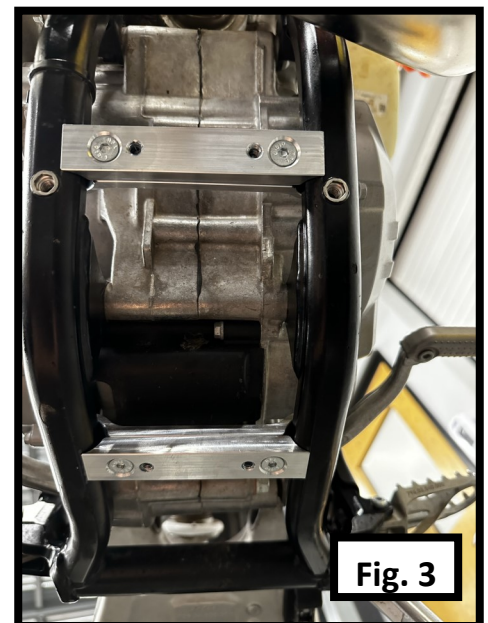
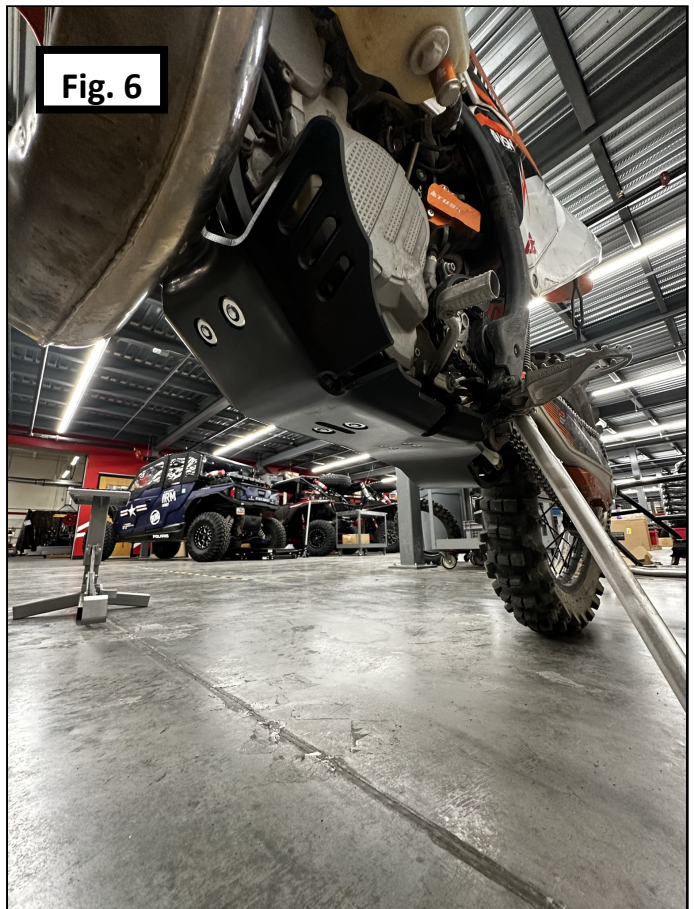


Fig. 3

3. Put the **Skid Plate** onto the bike by sliding the front tab just below the exhaust port and the frame. Then push the **Rear Mount Bracket** onto the cross brace below the foot pegs.
4. Check both the **Skid Plate** and the **Mounting Bracket** holes for proper alignment. Make adjustments as needed to the positioning of the **Mounting Brackets** until all four holes are aligned. **Fig. 4**
5. Once the brackets are properly aligned remove the **Skid Plate** and fully tighten the **Mounting Brackets**.
6. Using **Thread Locker**, tighten the **Skid Plate** to the frame of the bike using the 4- **M6 x 1.0 x 20mm Flange bolts (8mm head)** with the 4- **Cup Washer**. **Fig 5,6**



****Periodically check for loose hardware****



Enjoy the use of your new Tusk Severe Impact Skid Plate!